

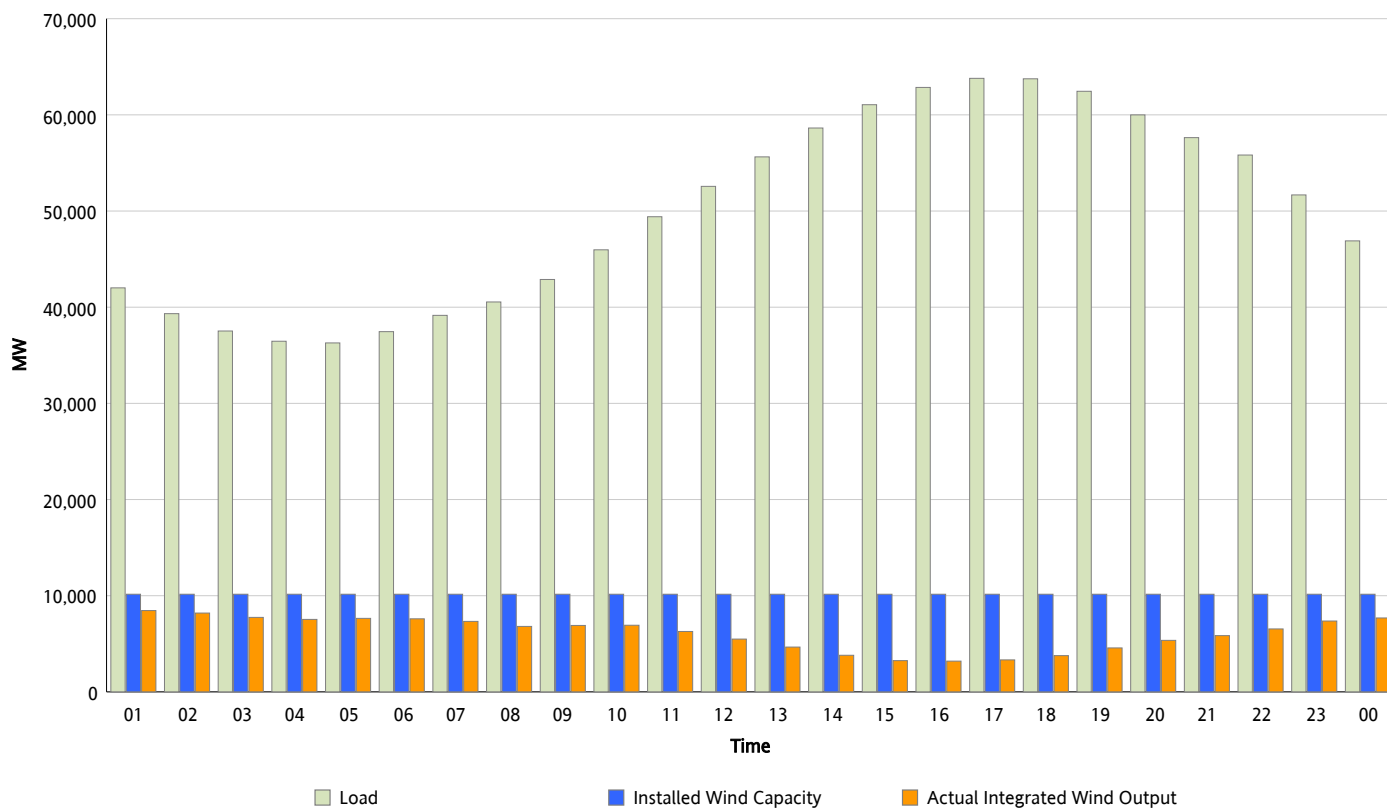


ERCOT Grid Operations

Wind Integration Report : 06/26/2013

Peak Load	63,798 MW
Load Peak Hour (HE)	17
Wind Over Peak	3,326 MW
Wind Record 05/02/13	9,674 MW
Max Wind Value*	8,723 MW
Wind Peak Time	00:01
Wind Integration %	20.08 %

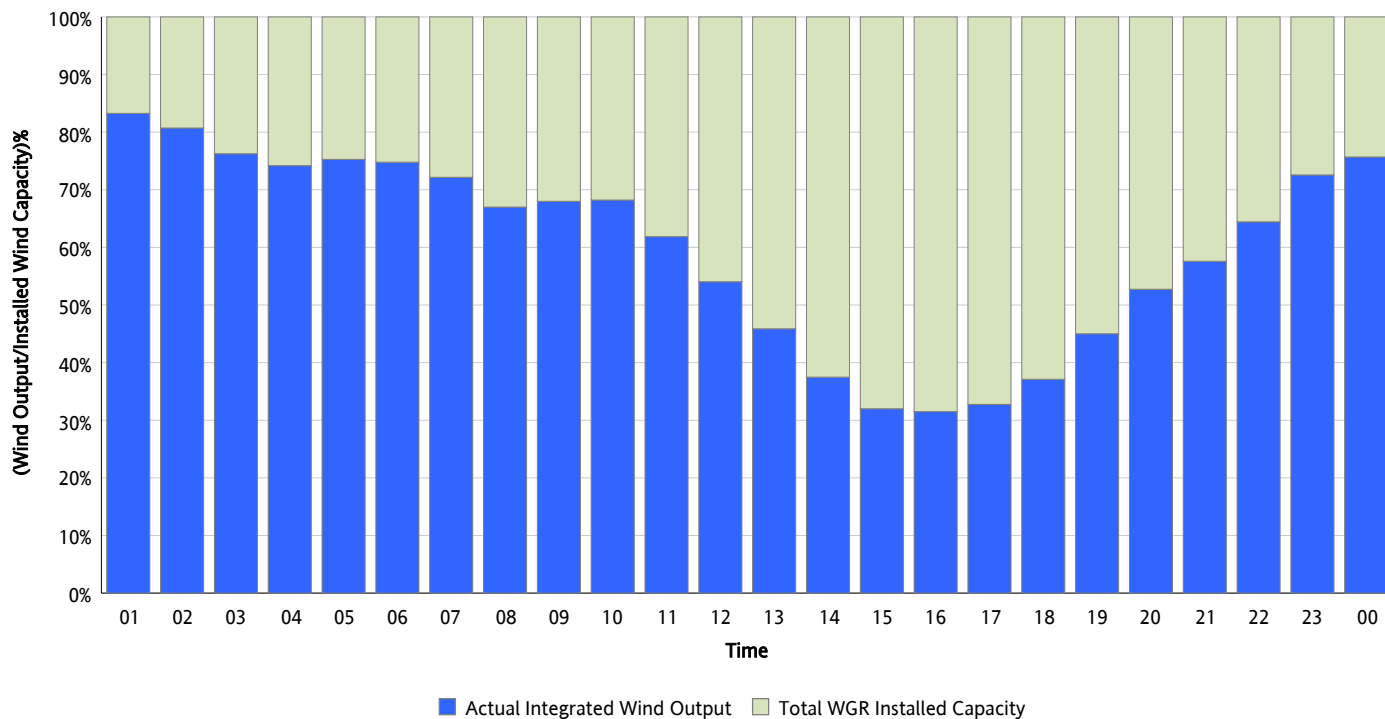
Hourly Average Actual Load vs. Actual Wind Output
06/26/2013



** Wind Record and Wind Max represent instantaneous values and the rest of the values are integrated over the hour*

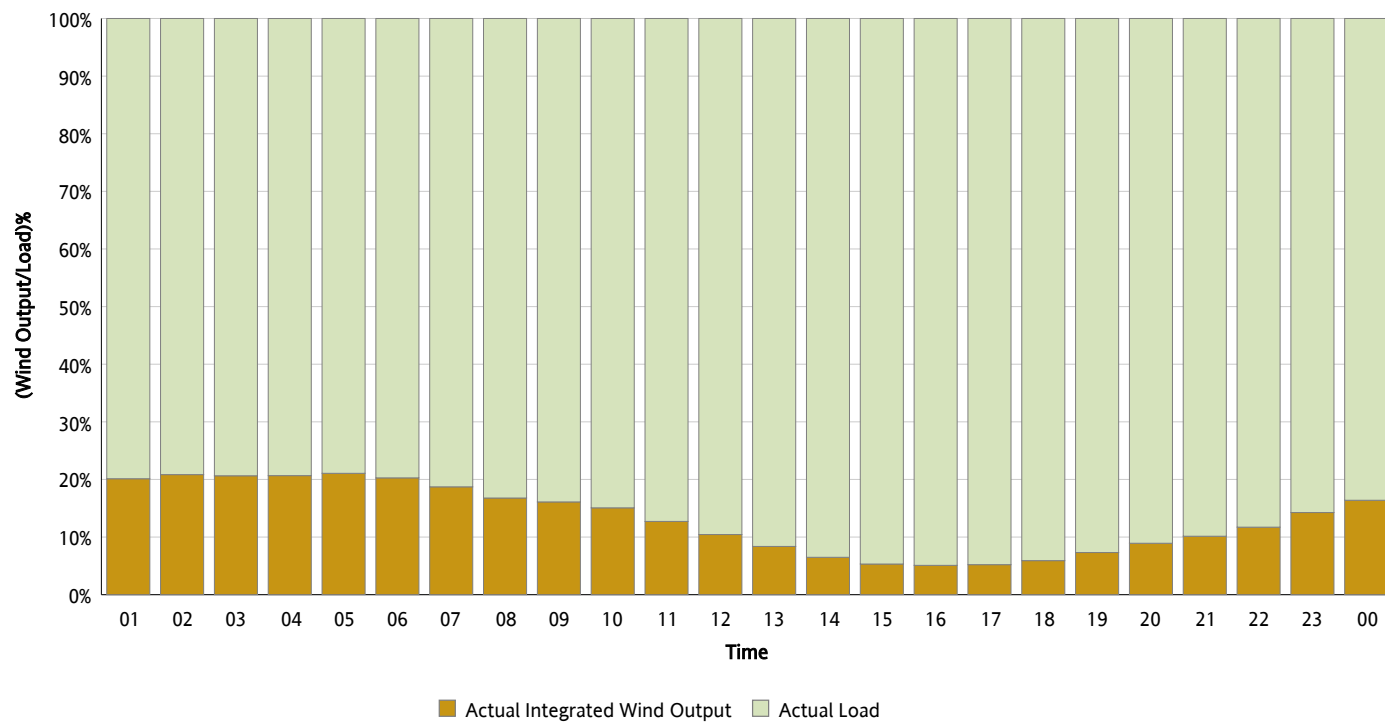
Actual Wind Output as a Percentage of the Total Installed Wind Capacity

06/26/2013



Actual Wind Output as a Percentage of the ERCOT Load

06/26/2013



ERCOT Load vs. Actual Wind Output

06/19/2013 - 06/26/2013

